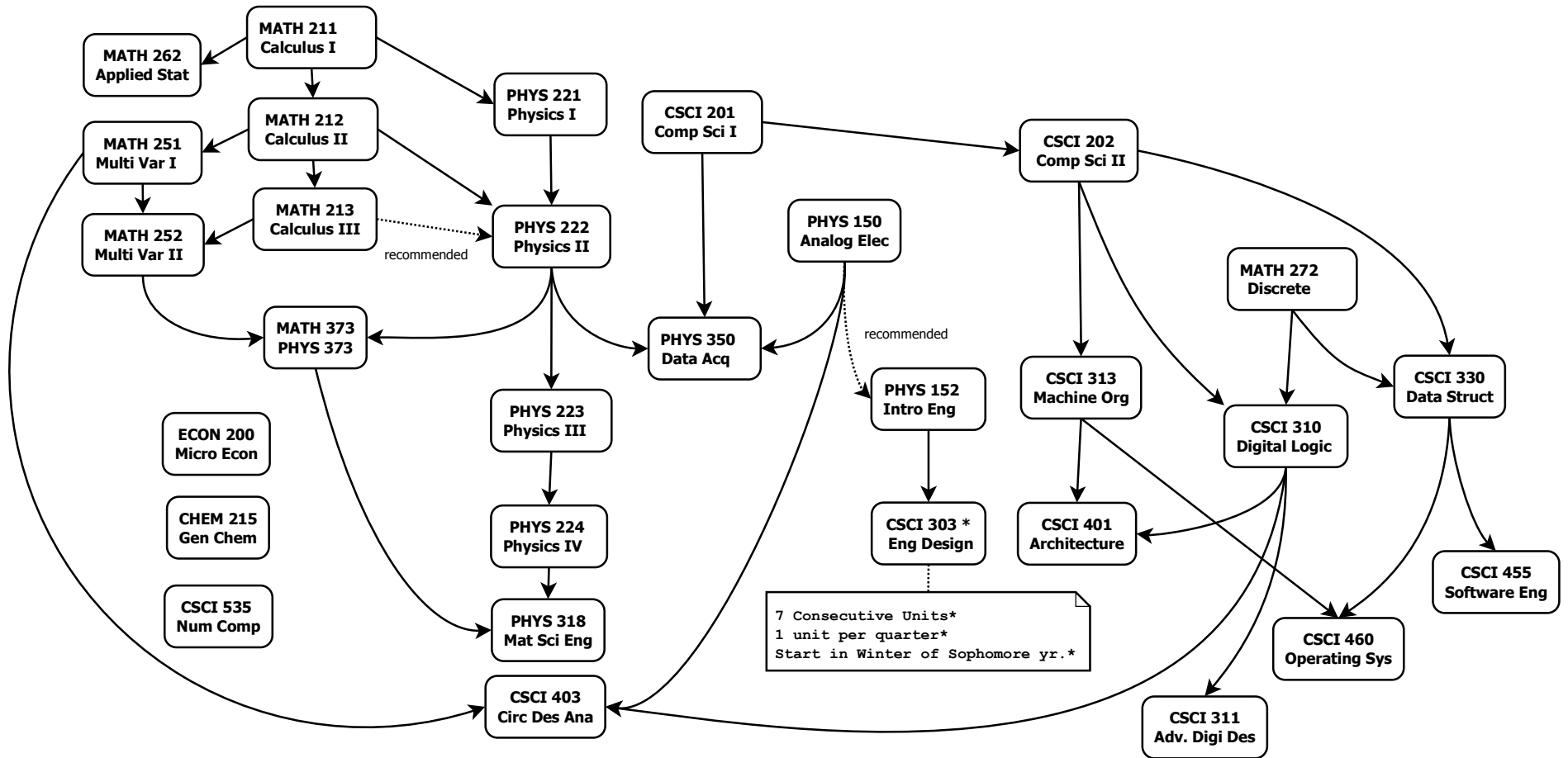


BACHELOR OF SCIENCE IN COMPUTER ENGINEERING

Flowchart of Coursework -- Academic Year 2009/2010



Choose one of the following Specializations:

Networking: CSCI 530 (Data Communications and Networks), CSCI 531 (High Performance Networks)

Embedded Systems: CSCI 510 (Advanced Computer Architecture), CSCI 521 (FPGA Design)

Computer Systems: CSCI 350 (File Systems), CSCI 570 (Compilers)

Software Engineering: CSCI 556 (Intro to Formal Methods, Models, and Languages), CSCI 565 (Systems Programming)